

T4

General Information

for Installing a T4 Automatic Pool Cover

This is a general guide on factors to consider for the installation of a T4 automatic cover system.

Detailed installation instructions are available.

WARNING

FOR YOUR SAFETY—This product must be installed and serviced by a contractor who is licensed and qualified in pool equipment by the jurisdiction in which the product will be installed where such state or local requirements exists. In the event no such state or local requirement exists, the installer or maintainer must be a professional with sufficient experience in pool equipment installation and maintenance so that all of the instructions in this manual can be followed exactly. Before installing this product, read and follow all warning notices and instructions that accompany this product. Failure to follow warning notices and instructions may result in property damage, personal injury, or loss of life. Improper installation and/or operation will void the warranty.

Cover-Pools Incorporated
2580 S Decker Lake Blvd, STE 300
West Valley City, UT 84119

800.447.2838
801.484.2724
www.coverpools.com

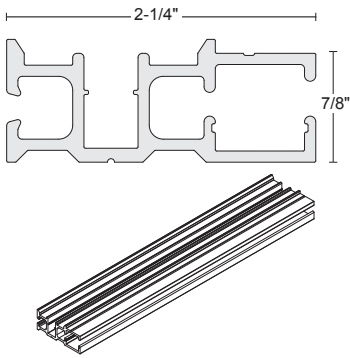


Table of Contents

| | |
|---|-----------|
| TRACK OPTIONS | 1 |
| EXCAVATION AND PLUMBING | 3 |
| Recessed Mechanism—Dual Race Track or Track Channel | 3 |
| Recessed Mechanism—SnapTop™ | 4 |
| ELECTRICAL | 5 |
| Electric Motor w/ Keyswitch (Standard Equipment) | 5 |
| Auto-Shutoff with Optional Accessory Board/AquaLink® | 5 |
| Auto-Shutoff with Accessory Board/ AquaLink® and Wireless | 6 |
| MECHANISM HOUSING | 7 |
| Recessed Concrete, Wood, or UPB Box—Dual Race Track | 7 |
| Recessed Concrete, Wood, or UPB Box—Dual Race Track Channel | 8 |
| Recessed Concrete, Wood, or UPB Box—SnapTop™ Track | 9 |
| Recessed Wood Box Construction | 9 |
| Deck-Mounted Bench Construction | 9 |
| COPING AND DECK | 10 |
| Guniting Layout—Undertrack | 10 |
| Coping or Deck Requirements—Undertrack | 10 |
| Coping or Deck Requirements—Undertrack (cont.) | 11 |
| Tile Beam—Dual Race Undertrack | 11 |
| RECESSED BOX COVER | 12 |
| Brackets | 12 |
| Vanishing Lid™ System | 12 |
| Bezel™ lids | 12 |
| SPECIFICATIONS | 13 |
| COVER SIZING AND PRICING | 14 |
| Cost Considerations | 15 |

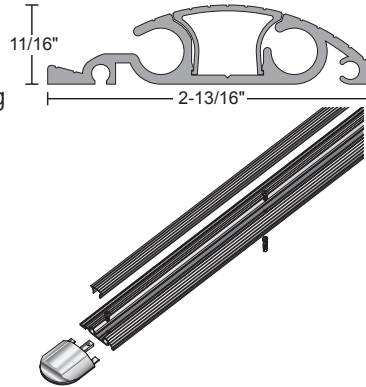
TRACK OPTIONS

1 Based on the pool design, choose the appropriate track style and any options.



Dual Race Undertrack™

- Mounted under deck coping
- Anodized aluminum
- Easier installation and replacement of cable.

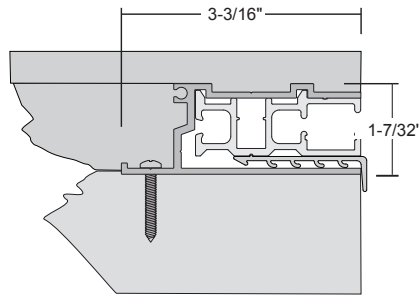


SnapTop™ Track

- For existing decks
- Low profile
- Installed on the deck surface
- Anodized aluminum
- Uses gliders or wheels
- Screws are concealed
- Standard Universal track also available
- Smaller Slim™ track available for Step-Saver™ systems

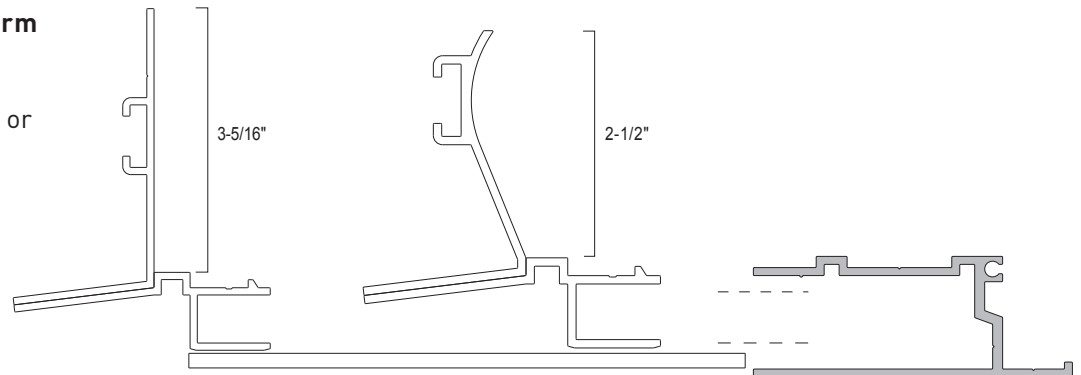
Dual Race Channel

- For concrete and fiberglass pools
- Raised-wall applications
- Track channel allows for custom cantilever profiles
- Foam or wood forms can be incorporated for deck profiles



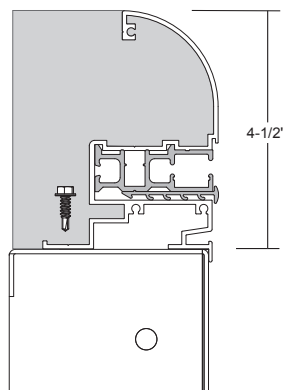
Dual Race Reusable Coping Form

- For concrete, fiberglass and vinyl-liner pools
- Eliminates the need for foam or wood forms
- Extruded aluminum



Dual Race Bullnose Vinyl Coping

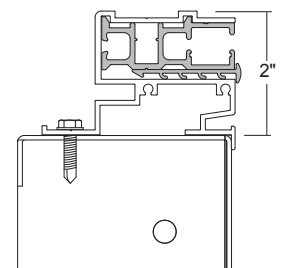
- For vinyl-liner pools
- 90°, 45°, 6" and 24" corners available
- Tracks locked in place by shims
- Bullnose coping options



Bullnose

Dual Race Track Channel with Vinyl Retainer

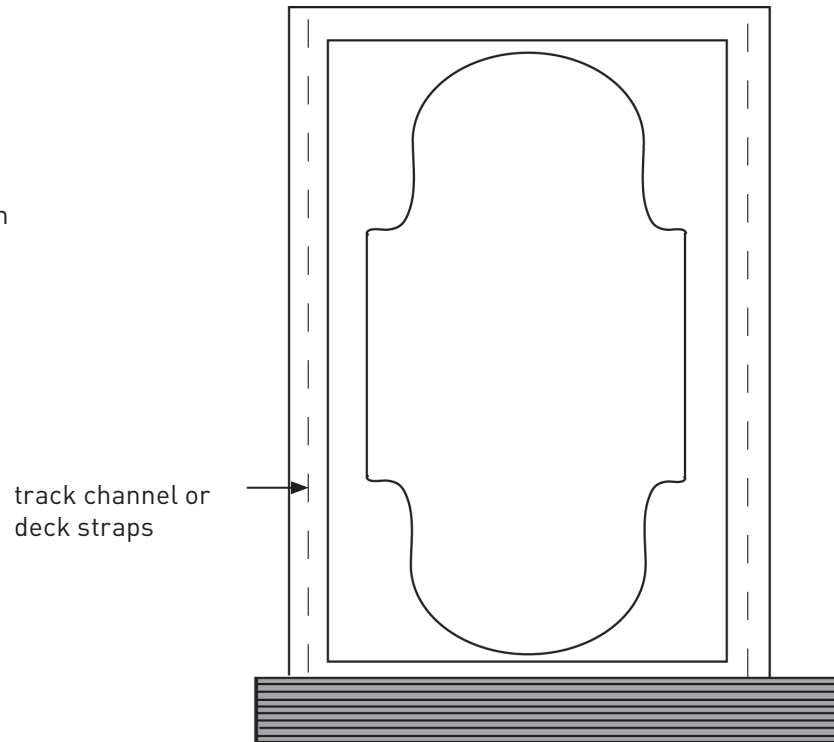
- Track channel allows for custom cantilever profiles
- Foam or wood forms can be incorporated for deck profiles
- Can be used with Cover-Pools Reusable Coping Form



Special Construction Applications

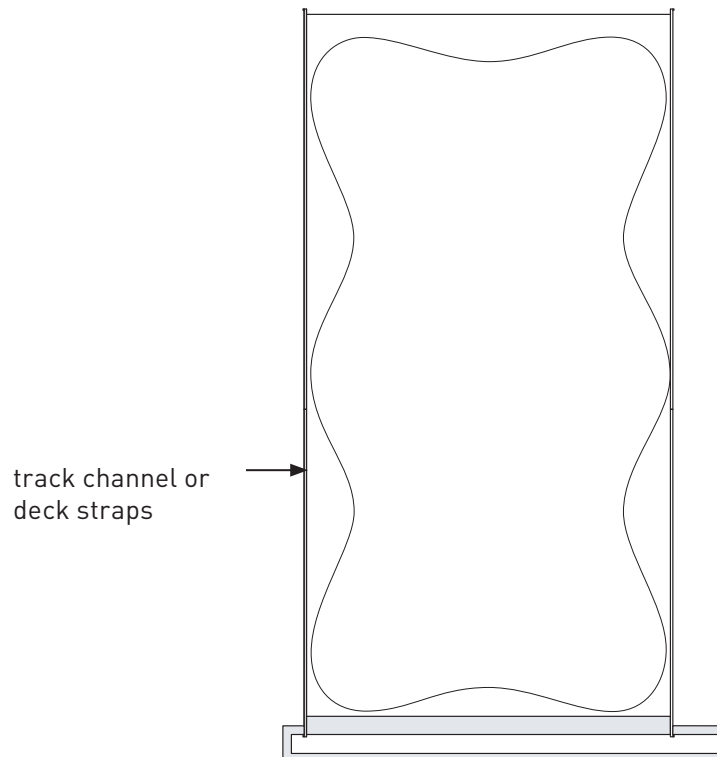
Deck-on-Deck Pools

Create a rectangular frame around the free-form pool for an undertrack installation with track channel.



Extreme Cantilever

Create a freeform pool by extending the cantilever up to 24" beyond the channel or track.



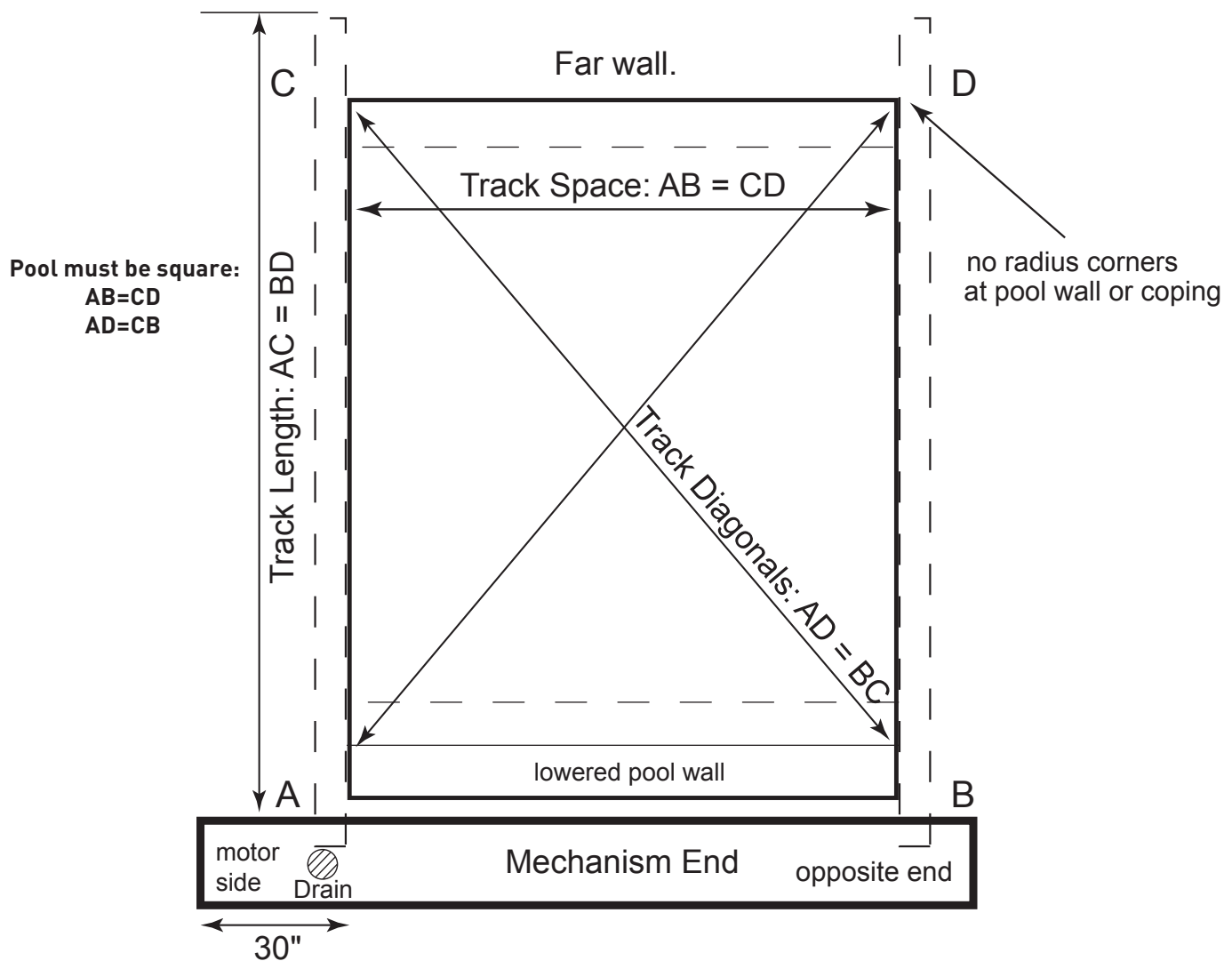
Exposed aluminum extrusions can be painted to match deck color excluding flush mount lid, track channel and vinyl liner coping.

EXCAVATION AND PLUMBING

2 Consider any special requirements for excavation and plumbing.

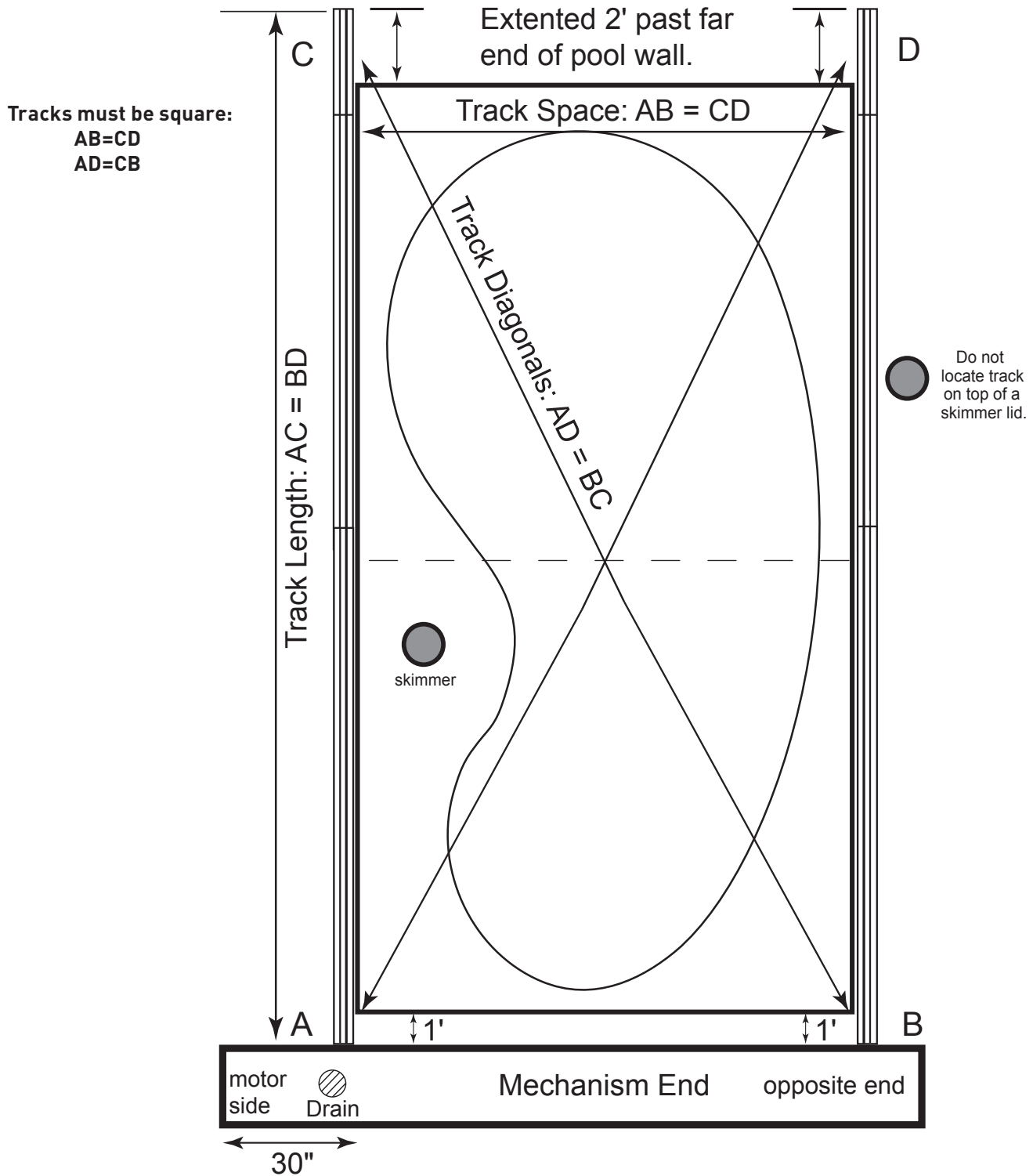
Recessed Mechanism—Dual Race Track or Track Channel

1. The tracks (and rectangular pools) must be a true rectangle. The tracks must be perpendicular to the unit mechanism and recessed housing (90°).
2. Over-dig the recessed cover box end of the pool 18" beyond the forms. Do not install plumbing within 14" of the deck in the housing area.
3. The motor can be on either end of the cover box.
4. Do not locate skimmers in the lowered pool wall.
5. All corners must be square (no radius) on the finished tile line or the coping.
6. Place 3" drain in floor or wall of recessed housing.



Recessed Mechanism—SnapTop™

The requirements of a recessed mechanism with a deck-mounted track are the same as the undertrack on the previous page. SnapTop track may be mounted at the pool edge.



ELECTRICAL

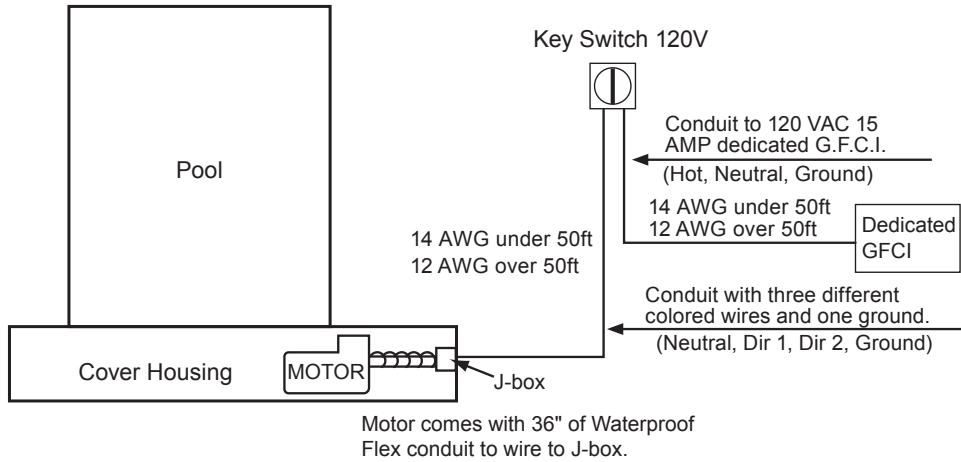
3

Choose electric or hydraulic power and controlling devices.

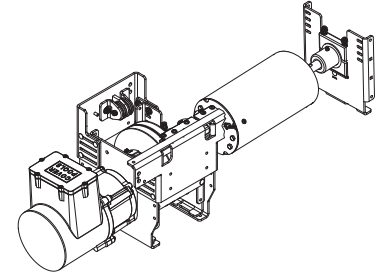
WARNING! These are minimum recommendations only. All local and federal codes of standard safe practices must be followed. Refer to the prewiring instructions for detailed instructions and additional mounting options.

Electric Motor w/ Keyswitch (Standard Equipment)

3/4 hp Motor with Slip Clutch



All switches must be mounted in full view of the cover operation.



electric 3/4 hp motor

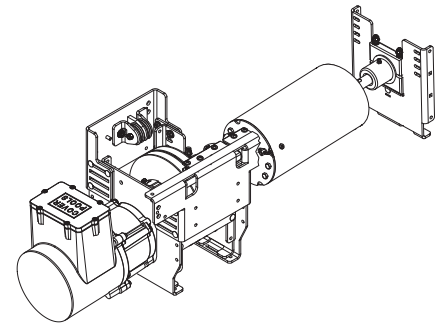
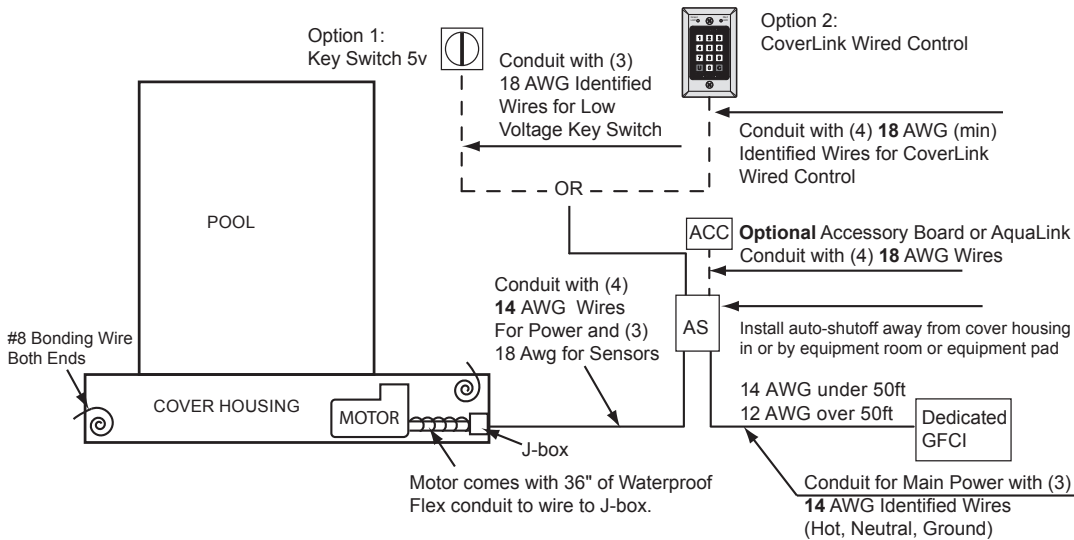
WARNING! These are minimum recommendations only. All local and federal codes of standard safe practices must be followed.

Auto-Shutoff with Optional Accessory Board/AquaLink®

3/4 hp Motor

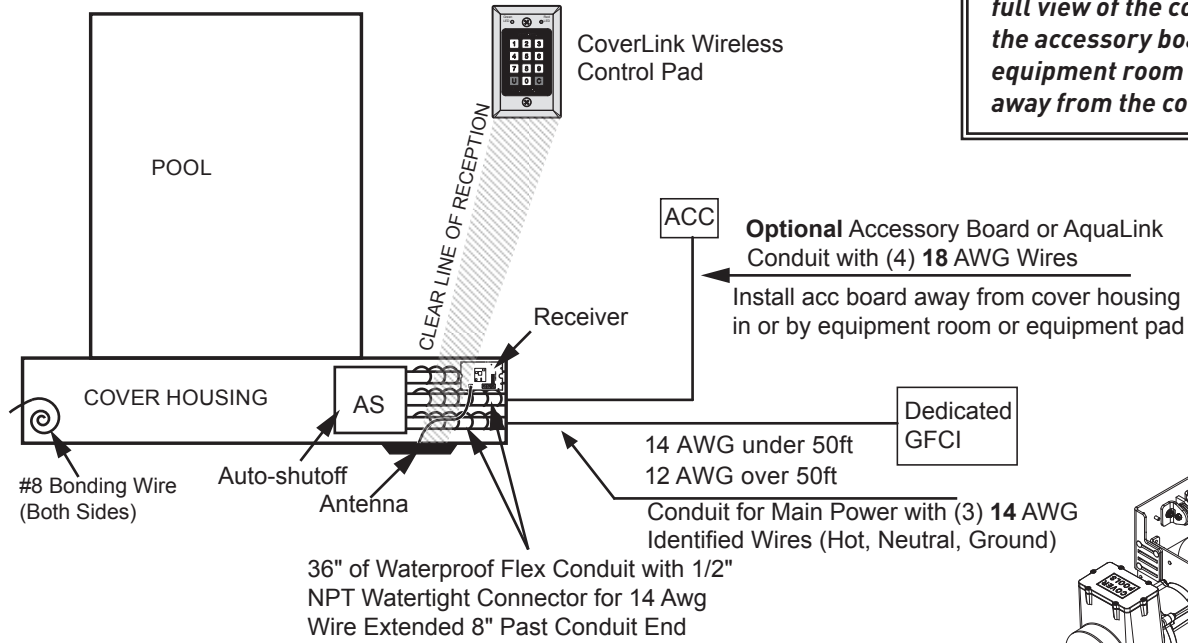
All switches/control pads must be mounted in full view of the cover operation.

Option 1: Auto-shutoff mounted outside housing.

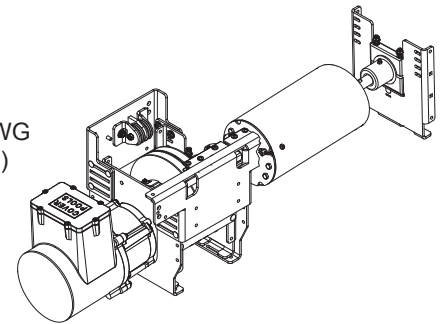


electric 3/4 hp motor

Auto-Shutoff with Accessory Board/ AquaLink® and Wireless
(Optional) -- 3/4 hp Motor



All control pads must be mounted in full view of the cover operation. Install the accessory board in or by the equipment room or equipment pad, away from the cover housing.



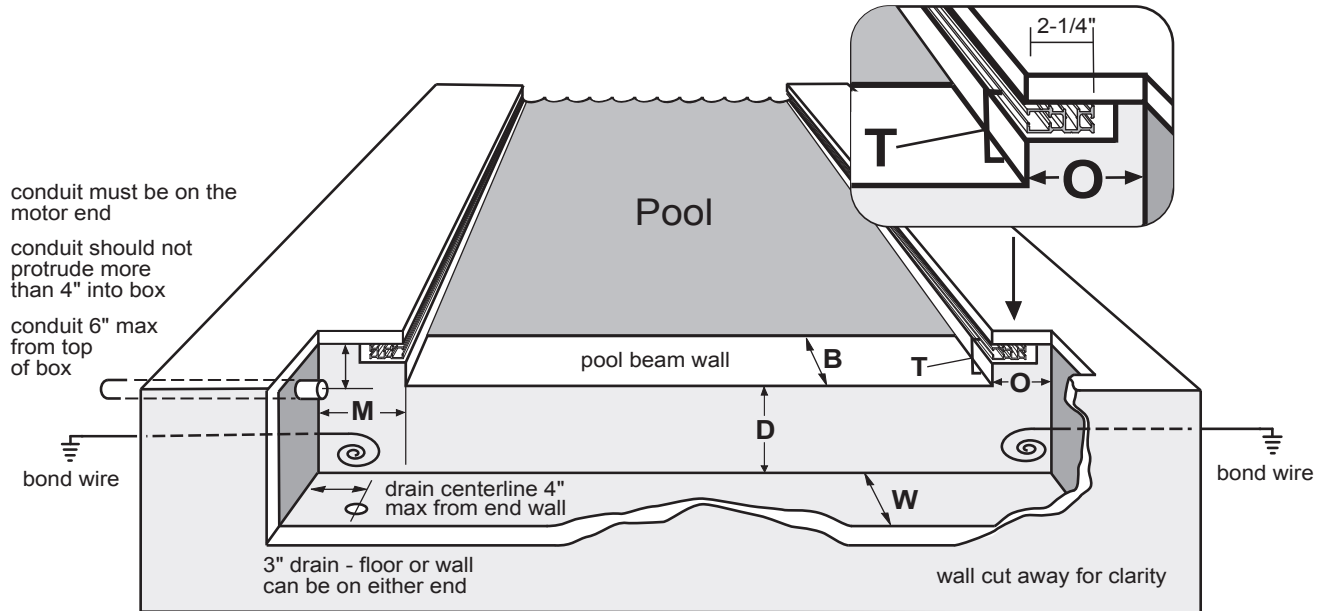
electric 3/4 hp motor

MECHANISM HOUSING

4

Choose a recessed mechanism (*concrete or wood box*) or deck-mounted mechanism. Systems include a lid assembly, bench frame assembly or fiberglass ends.

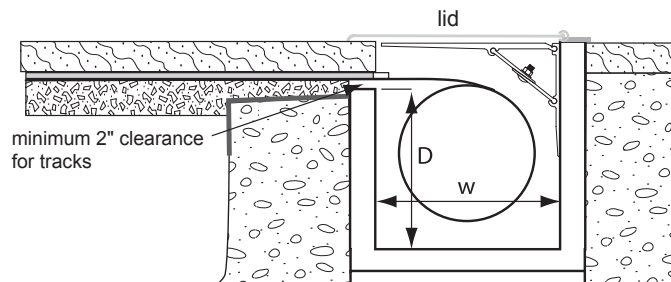
Recessed Concrete, Wood, or UPB Box—Dual Race Track



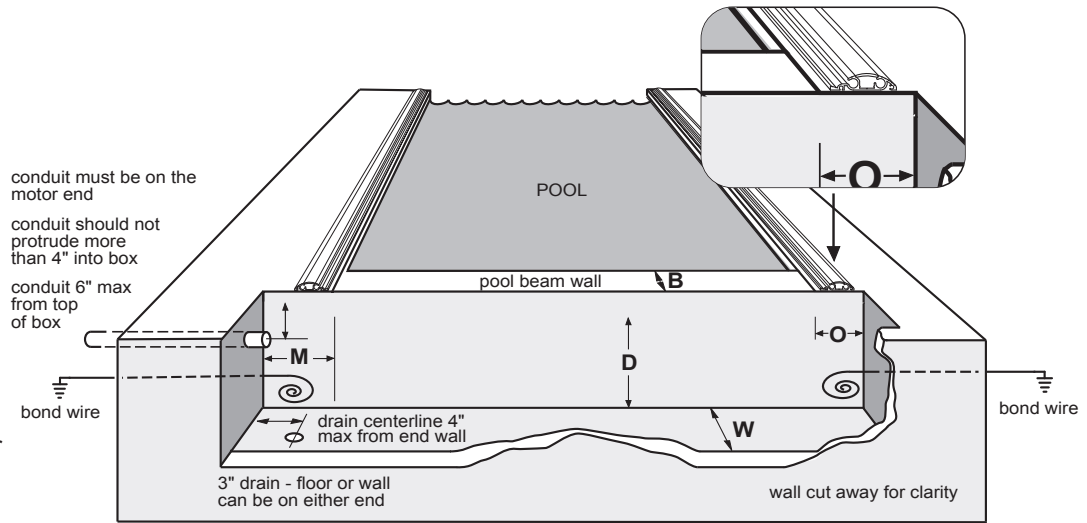
Consult a certified electrician and the pre-wiring diagrams for conduit and bonding requirements.

| Dual Race Undertrack Box Dimensions for T4 | MOTOR M | OPPOSITE O | BEAM B | THROAT T | DEPTH D | WIDTH W |
|--|------------|---------------|-----------|-------------------------|-------------|-------------|
| Pools under 55 ft. long x 24 ft. wide | 24" | 10" | 8-12" | 2" min to finished beam | 12-1/2" min | 12-1/2" min |
| UPB BOX Pools up to 55 ft. long | 24" | 10" | 8-12" | 2" min to finished beam | 13" | 13" |
| Pools over 55 ft. long x 24 ft. wide | 24" | 10" | 8-12" | 2" min to finished beam | 14 1/2" | 14 1/2" |
| Pools over 65 ft. long or 25 ft. wide and vanishing-edge pools — Call Cover-Pools 1-800-447-2838 | | | | | | |

Box Side View—Dual Race Track



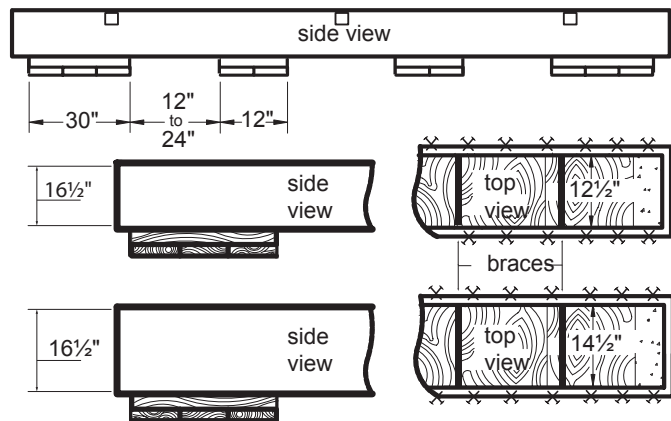
Recessed Concrete, Wood, or UPB Box—SnapTop™ Track



Consult a certified electrician and the pre-wiring diagrams for conduit and bonding requirements.

| Deck Mount Track Box Dimensions for T4 | MOTOR M | OPPOSITE O | BEAM B | DEPTH D | WIDTH W |
|--|------------|---------------|-----------|------------|------------|
| Pools under 55 ft. long x 24 ft. wide | 24" | 10" | 8-12" | 16½" min | 12½" min |
| UPB BOX Pools up to 55 ft. long | 24" | 10" | 8-12" | 13" | 13" |
| Pools over 55 ft. long x 24 ft. wide | 24" | 10" | 8-12" | 16½" | 14½" |
| Pools over 65 ft. long or 25 ft. wide and vanishing-edge pools — Call Cover-Pools 1-800-447-2838 | | | | | |

Recessed Wood Box Construction



Requirements:

The material used to construct the box should be: 2" x 12" pressure-treated lumber or redwood

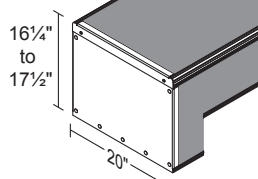
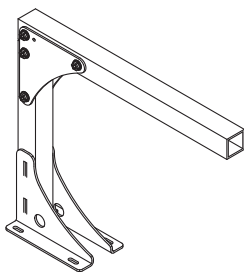
Upper trim:

2" x 4" pressure-treated lumber or redwood

Deck-Mounted Bench Construction

Everlast™ Bench Kit

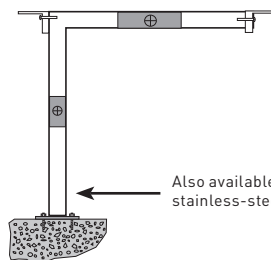
Modular bench kit uses adjustable-height brackets and polymer panels to create a low-maintenance bench system.



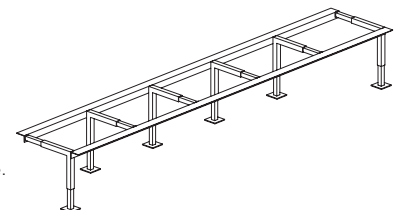
Available in 4 colors

Bench Frame

Three-piece adjustable steel brackets provide a maximum height of 20" by 24" wide. Surface material is not included.



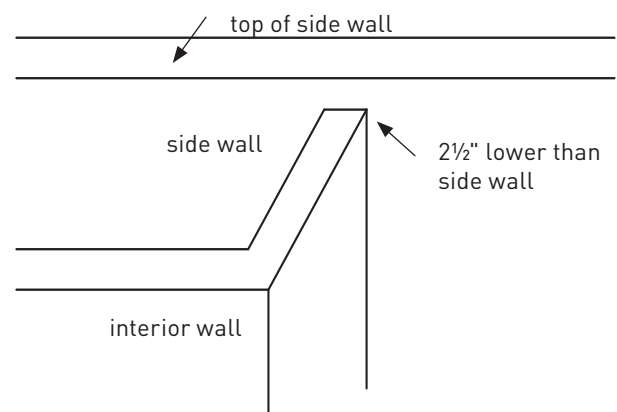
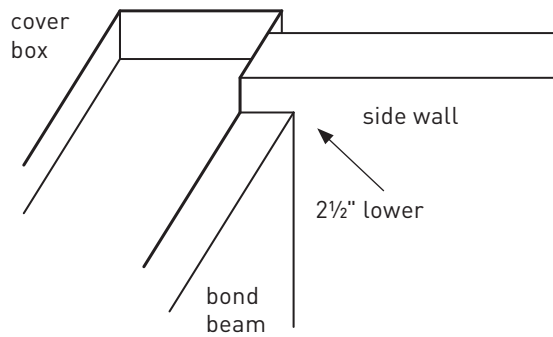
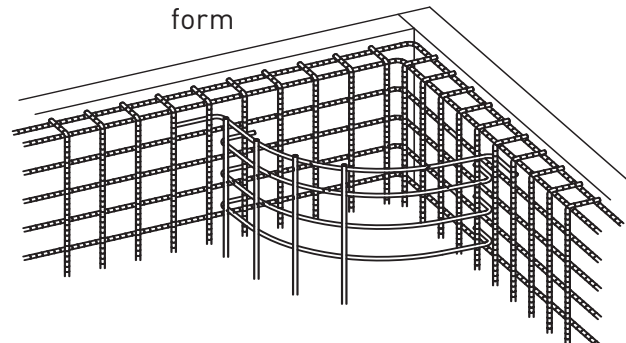
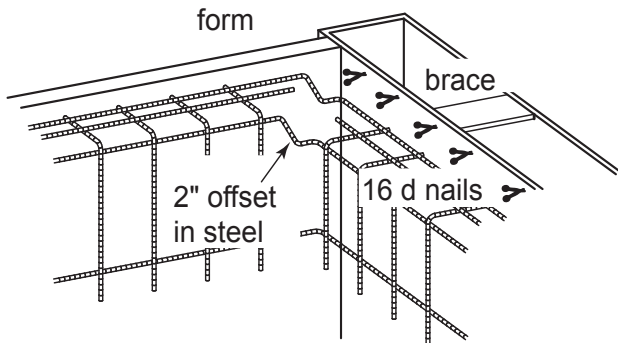
Also available with stainless-steel base.



COPING AND DECK

5 Consider the requirements for coping and deck installation.

Gunite Layout—Undertrack

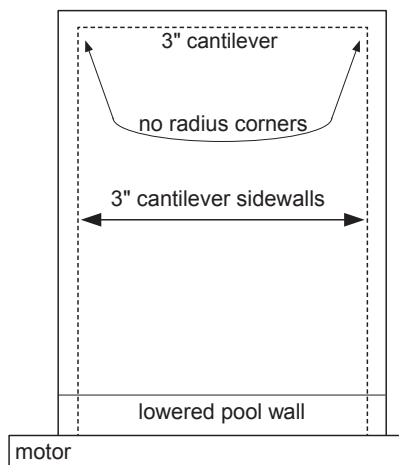


At the recessed box end, the pool wall (bond beam) must be shot 2 1/2" (2" finished with tile) lower than the side walls.

The top inside pool corners (above the waterline) must be square, not radius.

Any interior wall, such as for spas, also must be gunited 2 1/2" (2" finished with tile) lower than the side walls.

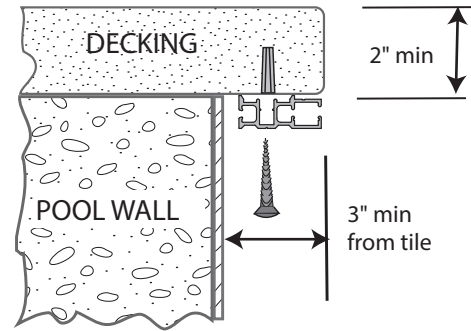
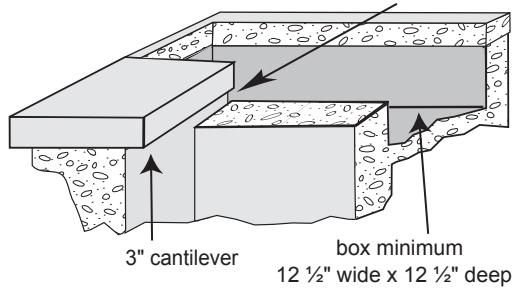
Coping or Deck Requirements—Undertrack



- All corners of the coping must be square
- Minimum **3" cantilever** from tile on **side walls**
- Minimum **3" cantilever** from tile on **end wall** opposite the mechanism

Coping or Deck Requirements—Undertrack (cont.)

Opening for the track must be $2\frac{1}{2}$ " at box (2" finished with tile), sloping to 3" inside pool



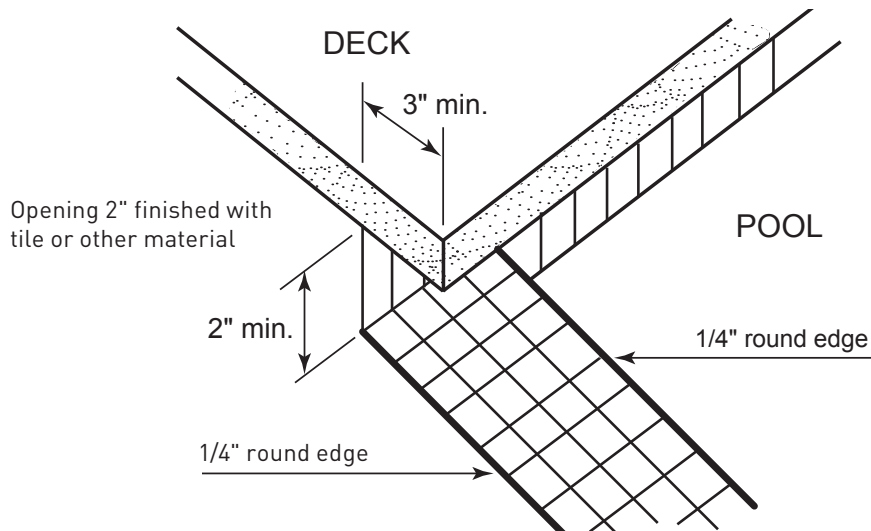
NOTE: The track must be mounted on the flat bottom of the coping. The coping measurement is **NOT** the track space. Coping must not extend more than $\frac{1}{2}$ " past the edge of the track.



Tile Beam—Dual Race Undertrack

The lowered pool wall is finished with a tile surface.

For the lowered wall edge, use a rounded tile on the front and back edges to minimize scraping on the cover.

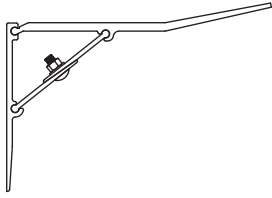


RECESSED BOX COVER

6

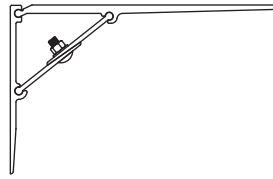
Choose lid and brackets to cover recessed box.

Brackets



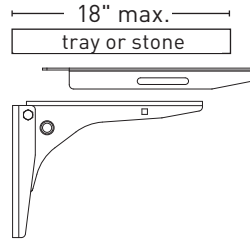
Standard Aluminum Lid Tilted Bracket for Universal, Snaptop™, and Flush Track

- Stepped or tilted anodized aluminum lid available with 4" or 6" hinge



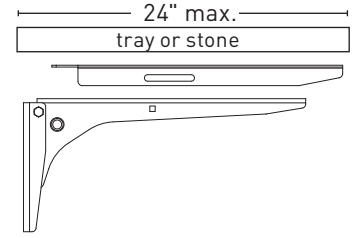
Standard Aluminum Lid Flat Bracket for Dual Race Undertrack

- Standard anodized aluminum lid available with 4" or 6" hinge



Vanishing Lid Adjustable 12" Stainless-Steel Bracket

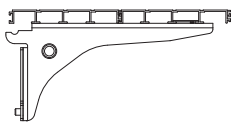
- For any tray less than 18"
- Extensions 14½" & 17½" available



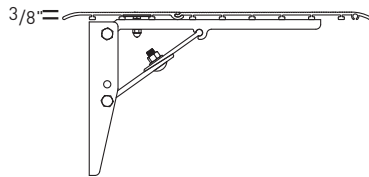
Vanishing Lid Adjustable 18" Stainless-Steel Bracket

- Maximum bracket spacing is two feet
- For trays 18-24" wide
- Extensions 20½" & 23½" available

Bezel™ lids

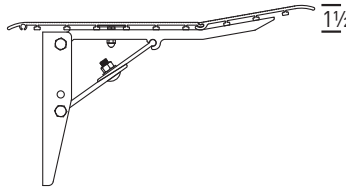


Flush Mount Lid for vinyl liner pools with UPB Box

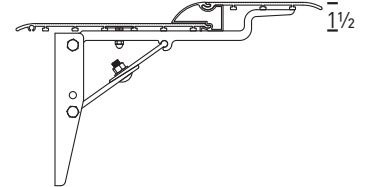


Flat Bezel Lid

Available in 16" or 18" width



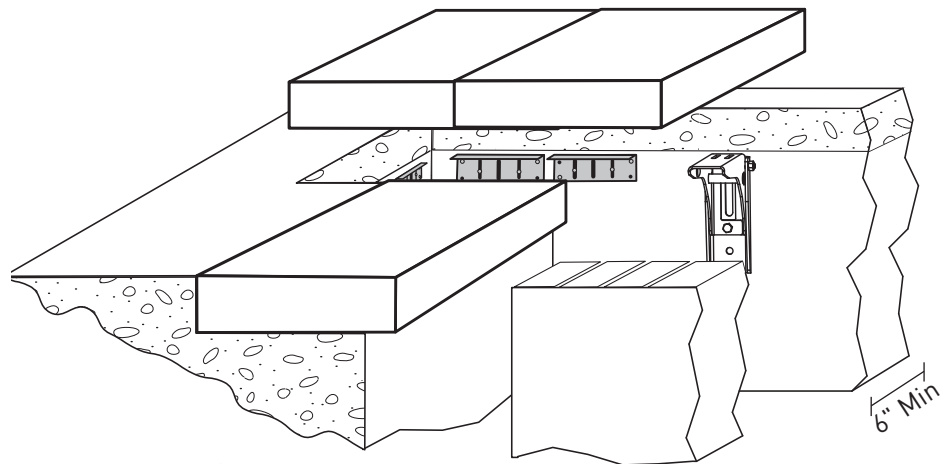
Tilted Bezel Lid



Stepped Bezel Lid

Available in 16" width with 16" or 18" ends

Vanishing Lid™ System



NOTE:

Walk-on Vanishing Lid systems require a concrete housing, or, if using a wood housing, a concrete wall must be poured behind the box for anchoring brackets.

Walk-On Vanishing Lid

This design offers an adjustable tray support system for any type of deck material. Stainless-steel or aluminum trays and stainless-steel brackets provide the support base for a strong walk-on lid that can blend with the surrounding deck.

Note: The deck thickness must be increased for extended trays if the leading edge is going to fit under the tray. Contact Cover-Pools for more information.

The maximum width of any tray is 24".
The maximum length of tray is 24".

SPECIFICATIONS

Review system details for T4 systems.

QuadCore™ Fabric

- Material: PVC vinyl, laminated over a reinforced polyester mesh for strength and tear resistance
- Rigorously Tested: The exclusive formula is the product of 50 years of testing and experience
- Designed for the Pool Environment: UV, mildew, and pool-chemical resistant with superior dimensional stability
- Weight: 18 oz. per square yard
- Thickness: 28 mil laminated vinyl
- Strength: Exceeds the ASTM F1346-91 minimum standard of 485 lbs. per 4' radius
- Construction: Fabric is attached to webbing with double-sewn Dabond® bonded polyester thread for durability
- 11 standard colors: dusky blue, royal blue, light blue, aqua, forest green, beige, tan, brown, gray, slate gray, and black
- Additional special-order colors available
- 7- year limited prorated standard warranty
- Sewn webbing in 9 optional colors
- Optional Ultimate™ heat sealed webbing in 6 colors
- Includes stainless steel cable

Track Styles

- 7-year limited warranty on all aluminum extrusions
- All aluminum extrusions are 100% anodized
- Dual Race Undertrack or SnapTop™
- Top-mounted track channel for concrete and fiberglass pools
- Dual Race Track channel system for vinyl pools
- Coping channel for vinyl pools
- V-Pak™ kit for vinyl pools (includes system, fabric, channel, box, and lid)
- Reusable coping forms (2 Profiles)
- CorrResist™ non-metallic Track Channel

Mechanism

- Exclusive CorrResist end hubs with stainless steel, designed for salt water systems
- Thicker marine-grade anodized aluminum frame and bracket
- Limited lifetime warranty
- Exclusive positive-shift system
- Exclusive CorrResist rope reel with stainless steel side plates designed for quiet operation
- Standard electric system comes with either the slip clutch or auto-shutoff
- Adjustable end hub
- Adjustable cable reels

- Standard 12" aluminum lid with either 4" or 6" hinge
- Bezel™ lids, 16" and 18" wide
- Vanishing Lid™ trays, 12"–24" wide with stainless-steel trays and stainless-steel adjustable brackets
- Fiberglass deck-mounted mechanism end housings
- Ultimate™ Polymer recessed box
- Everlast™ modular bench kit (available in 4 colors)
- Bench frame assembly

Power and Controls

- 3-year limited warranty on all electrical
- 3/4 hp waterproof electric motor
- 1 ½ hp/2000 PSI hydraulic system
- Safety lockout key control
- CoverLink™ touchpad control (wired or wireless)
- Low-voltage auto-shutoff with key switch
- Water-feature shutoff
- Jandy iAquaLink™ Interface

Safety

- Exceeds ASTM F1346-91 requirements
- Full UL listing
- Bonding included with all automatic systems
- Automatic water-removal cover pump included

NOTE:

Some cover manufacturers treat cover pumps and bonding as options for their systems. A solid safety cover without a pump is NOT approved to ASTM F1346-91 safety standards. The installation of an automatic cover system without bonding is not a UL-listed product.

Other Options

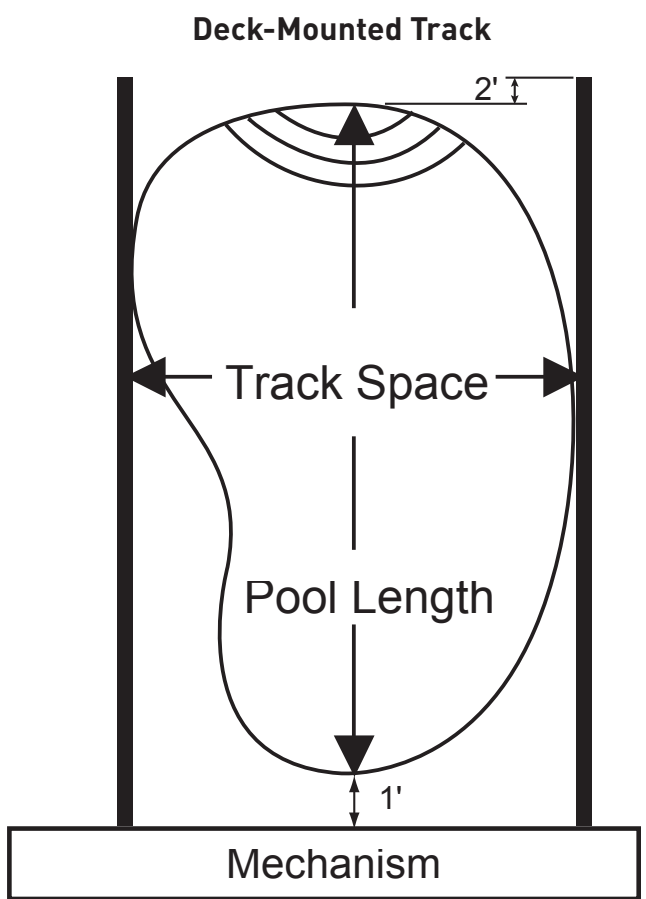
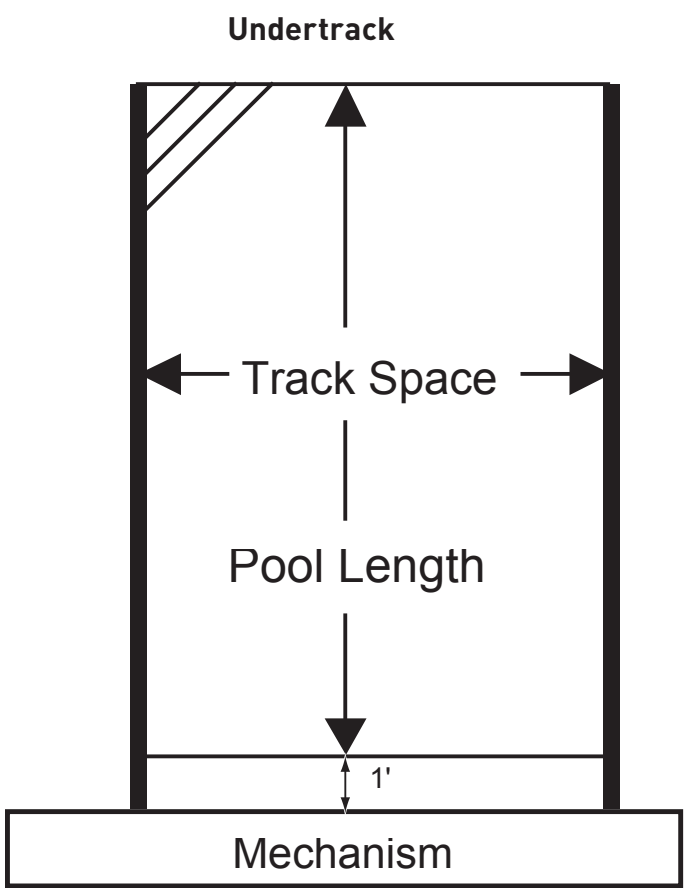
- Painting—extrusions can be painted to match most deck surfaces or fabric colors excluding flush mount lid, track channel and vinyl liner coping.

Mechanism Housing

COVER SIZING AND PRICING

Determine pricing according to the cover specifications.

Pricing based on motor mechanism being installed one foot from pool edge, motor position on left or right.



TRACK SPACE x POOL LENGTH=COVER SQUARE-FOOT PRICING

Track widths over 25' or lengths over 65' require factory approval (maximum track space is 36').

Cost Considerations

Excavation/Plumbing

- Housing excavation
- 3" drain for housing drain— drain to air or drain to pit
- 3" conduit for hydraulic-unit housing

Electrical

- 1/2" Conduit for mechanism power
- Electric run to key switch
- 15-amp GFCI dedicated circuit for mechanism at panel (20 AMP for hydraulic)
- Electric runs over 50' require heavy-gauge wire
- Electrical run for accessory board
- 1/2" Conduit (for low voltage wires) required with Auto-shutoff/CoverLink wired controls

Concrete

- Concrete, gunite or shotcrete box, minimum 6" thick, 3500 PSI, (no rebound)
- Additional deck around housing/mechanism
- Tile on lower beam, beam cover or other

Cover/Mechanism

- Unit price based on track space x pool length including steps, plus options
- Track space 25' 6" or more may require a larger main mechanism tube and larger leading edge for fabric

Dual Race Track and Channel

Dual Race track or SnapTop track standard

- Dual Race Track channel for concrete or fiberglass pools (2 or 3 sided)
- SnapTop™ track
- Dual Race Vinyl-liner pool coping 90°, 45°, 6" radius or 24" radius
- Dual Race Track channel for vinyl-liner pools
- Painted track extrusions

Housing

Aluminum lid, bench frame or fiberglass ends standard

- Painted lid extrusions
- Aluminum Lids: Standard, Bezel™ lids, or Flush Mount
- Walk-on Vanishing Lid™ trays
- Bench for deck-mounted mechanism

Power/Controls

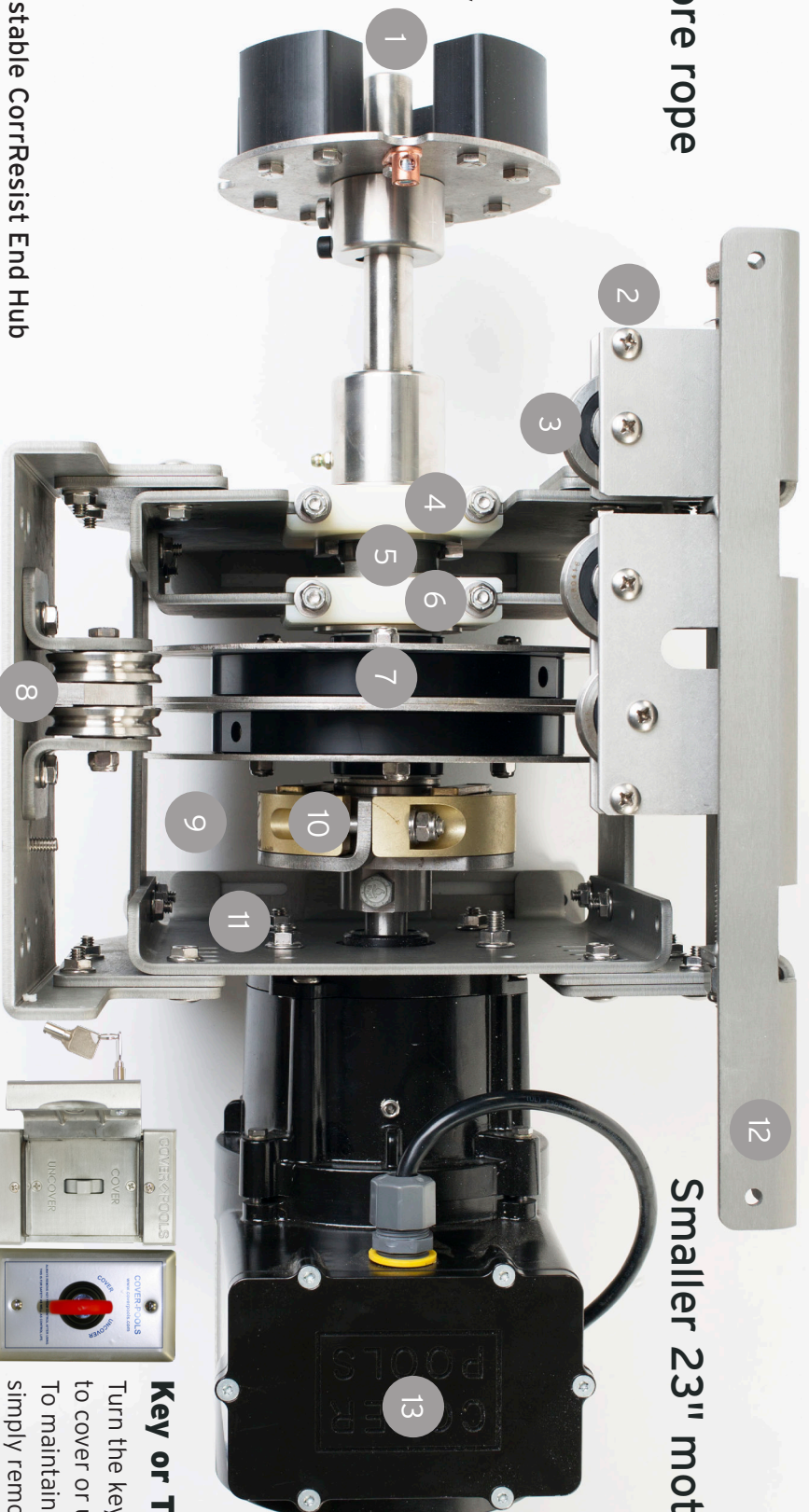
110 V motor and hard-wired 3-wire key standard

- Auto-shutoff control with amp limit
- Wireless CoverLink™ digital touchpad control
- Wired CoverLink digital touchpad control
- Water-feature shutoff/accessory board
- Jandy iAquaLink™ interface & control

T4 Automatic Pool Cover System

No more rope

The T4 is the first and only automatic pool cover system designed for stainless steel cable.



- 1 Adjustable CorrResist End Hub
- 2 Stainless Steel Hardware
- 3 Large 1-1/2" Pulleys
- 4 Drum Brake
- 5 Positive/Sure-Shift Drive
- 6 Reel Brake
- 7 Auto-Tension CorrResist Cable Reels with Adjustable Diameter

- 8 Vertical Pulleys (poolside)
- 9 Quick-Cable Attachment
- 10 Industrial Grade Slip Clutch
- 11 Thich Hard-Coated Anodizing on Marine-Grade Aluminum Brackets
- 12 Quick Install Cradle
- 13 New Condensed Motor with Potted Capacitor

Smaller 23" motor side



Key or Toggle switch
Turn the key or toggle switch to cover or uncover the pool. To maintain a secure system, simply remove the key or lock the toggle cover.

CoverLink™ digital control

The code-accessed digital control system allows you to program up to four codes to create convenient and secure access to the system. With the wireless version, you have endless options for mounting the touch pad within view of the pool.



NOTES

ZODIAC® FAMILY OF BRANDS | **Heritage of Excellence**

Cover-Pools Incorporated | 800-447-2838 • 801-484-2724 | www.coverpools.com

©2018 Cover-Pools Incorporated is a wholly owned subsidiary of Zodiac Pool Systems, Inc.
ZODIAC® is a registered trademark of Zodiac International, S.A.S.U., used under license.