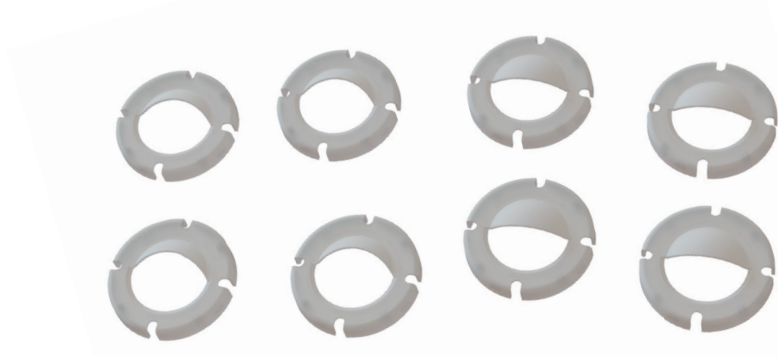




## Accessory Instructions



### Nicheless LED Underwater Light

**These Instructions are to be used on  
Jandy Pro Series accessories:**

- LENSCVRW    WHITE LENS COVER KIT
- LENSCVRG    GRAY LENS COVER KIT
- LENSCVRB    BLACK LENS COVER KIT

### **⚠ WARNING**

**FOR YOUR SAFETY** - This product must be installed and serviced by a contractor who is licensed and qualified in pool equipment by the jurisdiction in which the product will be installed, where such state or local requirements exist. In the event no such state or local requirement exists, the maintainer must be a professional with sufficient experience in pool equipment installation and maintenance, so that all of the instructions in this manual can be followed exactly. Before installing this product, read and follow all warning notices and instructions that accompany this product. Failure to follow warning notices and instructions may result in property damage, personal injury, or death. Improper installation and/or operation will void the warranty.

Improper installation and/or operation can create unwanted electrical hazard which can cause serious injury, property damage, or death.

# Section 1. Important Safety Instructions

## READ AND FOLLOW ALL INSTRUCTIONS

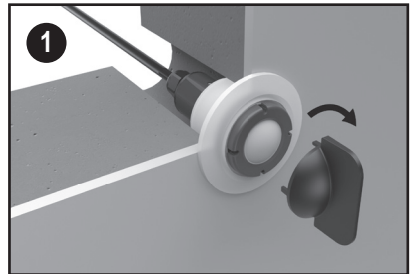
### Section 2. Package Contents

Before starting, check that you have the correct parts as indicated below. If any parts are missing or incorrect, please call your local distributor or Zodiac Pool Systems technical support at 1-800-822-7933 for assistance.

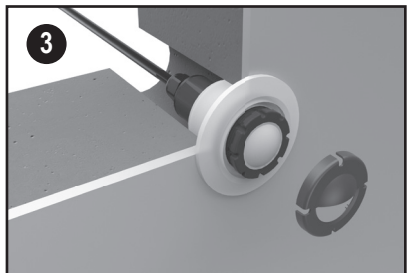
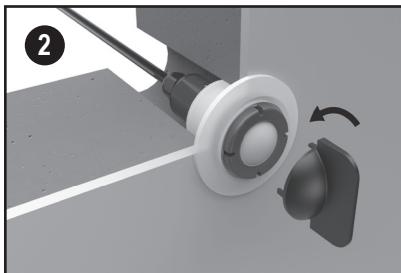
Item	Description	Contents (Qty)
LENSCVRW	White Lens Cover Kit	White Quarter Moon Lens Covers (4) White Half Moon Lens Covers (4) Installation Tool
LENSCVRG	Gray Lens Cover Kit	Gray Quarter Moon Lens Covers (4) Gray Half Moon Lens Covers (4) Installation Tool
LENSCVRB	Black Lens Cover Kit	Black Quarter Moon Lens Covers (4) Black Half Moon Lens Covers (4) Installation Tool

### Section 3. Installation

1. Using the installation tool, tighten the light all of the way until the tool's handle is pointing directly straight up and down.
2. Unscrew the light turning 2 revolutions (720 degree rotation), so that the handle ends in the same upright position.
3. Snap on the lens cover.
4. Using the installation tool, screw the light back into it's original position with the half or quarter moon centered at the top of the light.



TIP: Try different lens covers (half moon or quarter moon) to achieve the most ideal effect.



# NOTES

**Zodiac Pool Systems LLC**

2620 Commerce Way, Vista, CA 92081  
1.800.822.7933 | [www.ZodiacPoolSystems.com](http://www.ZodiacPoolSystems.com)

**Zodiac Pool Systems Canada, Inc.**

2115 South Service Road West, Unit 3 Oakville,  
ON L6L 5W2  
1.888.647.4004 | [www.ZodiacPoolSystems.ca](http://www.ZodiacPoolSystems.ca)

*ZODIAC® is a registered trademark of Zodiac International, S.A.S.U., used under license. All other trademarks referenced herein are the property of their respective owners.*

©2018 Zodiac Pool Systems LLC H0643800\_REVB